

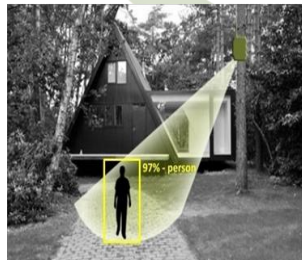
A person wearing a black t-shirt and blue jeans is standing in a field of tall grass. They are holding a black handheld device with a screen and a small antenna. The background shows a line of trees under a bright sky.

**ATC**  
**Analytech system -**  
**User manual**

# Atc Analytech system

- The ATC system detection and filtering is intended to be used as a tool for automatically identifying and filtering objects according to the user's definition.
- With the system the customer can filter unwanted / irrelevant images for him.
- ATC provides-
  - Characterization and customization of the system according to customer needs.
  - System assimilation.
  - Service and technical support.
  - Lab services.
  - Responsibility.

➤



“תמונה אחת שווה אלף שומרים”

## Welcome to ATC Analytech system

If you have an account please enter your email address and password.

If you don't have an account please click **create new account**

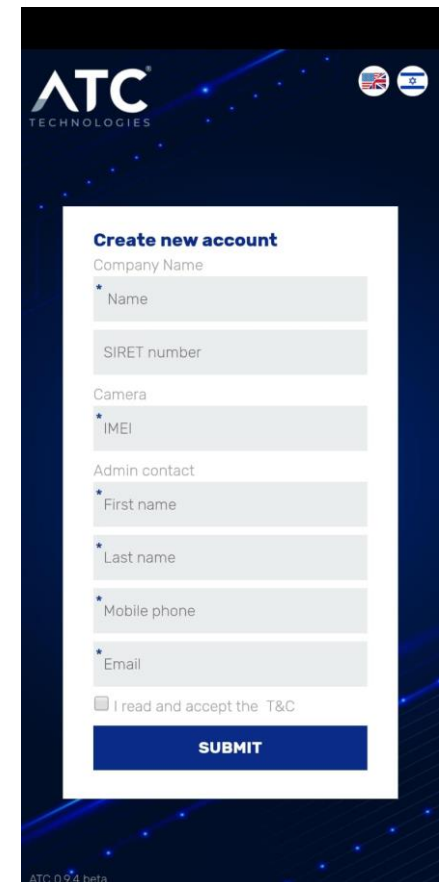
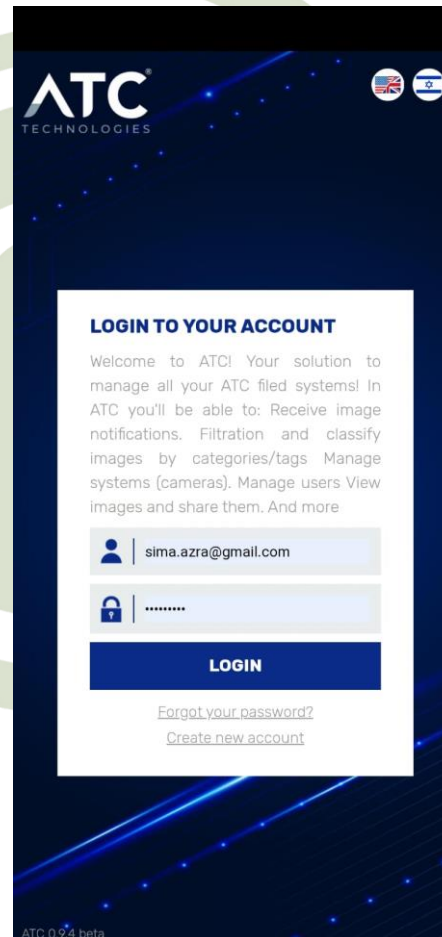
Now, fill in all of your account details.

When finished, read the terms of use of the system and confirm them.

After clicking **submit** you will get an email to verify your email address.

Now- enter a personal password.

Please login to your account.

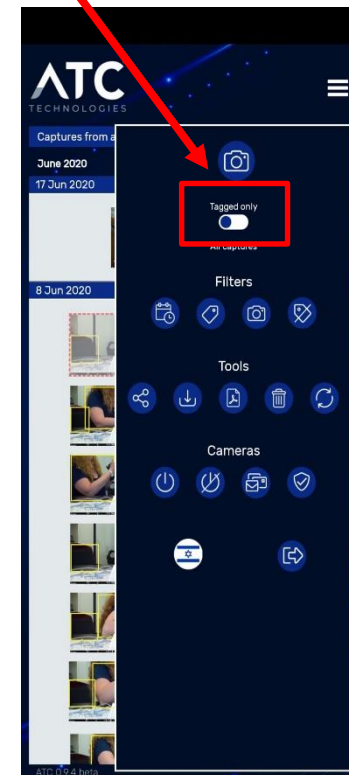


## Welcome to ATC system

### gallery screen -

This screen will display all the images from all cameras available to the user.

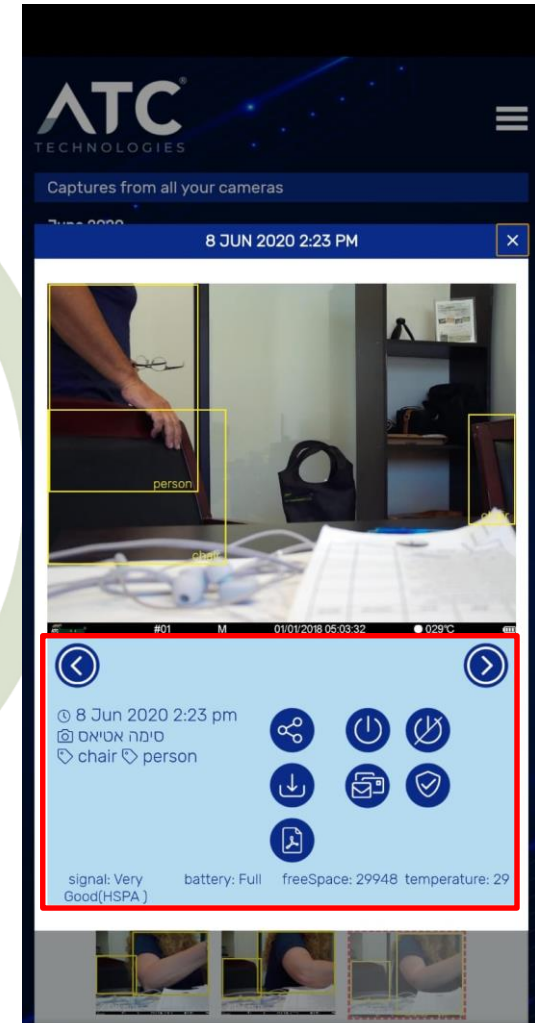
The images shown are only images that the system has detected in an object, If the user wants to view all images that are received of whether an object has been detected or not .



## Welcome to ATC system

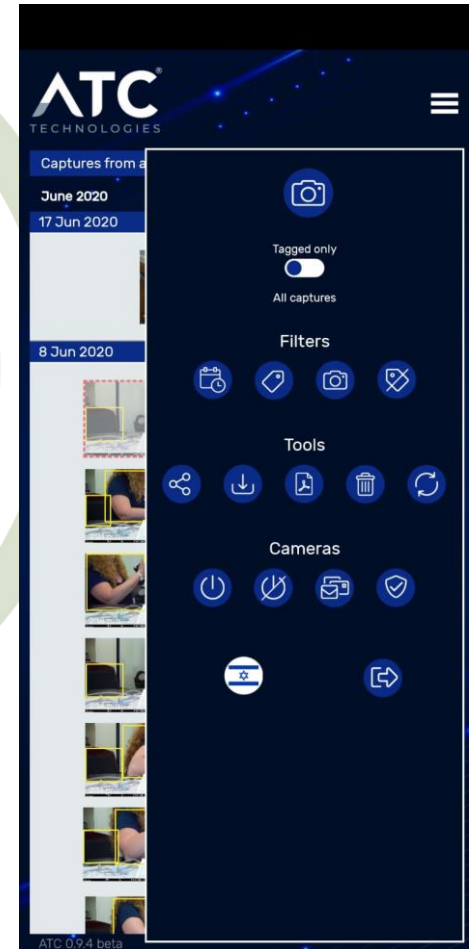
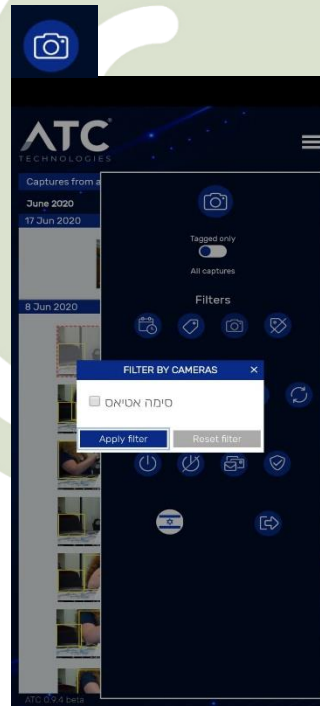
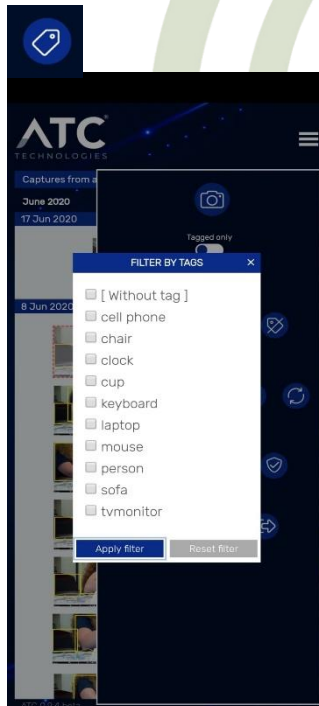
### gallery screen -

- At the bottom of the image will show the following data:
  - Date and time of photo taking.
  - The objects identified in the image by the system.
- Direct commands for managing the camera through the image.
  - Sharing - Sharing the image by app of your choice.
  - Download - Download the image locally.
  - PDF.
  - Turn on - Turn on the camera.
  - Turn Off - Turns off the camera.
  - Take a picture and send
  - Status - Get the status of the camera.



# Welcome to ATC system

User can see the picture at the gallery filtered by

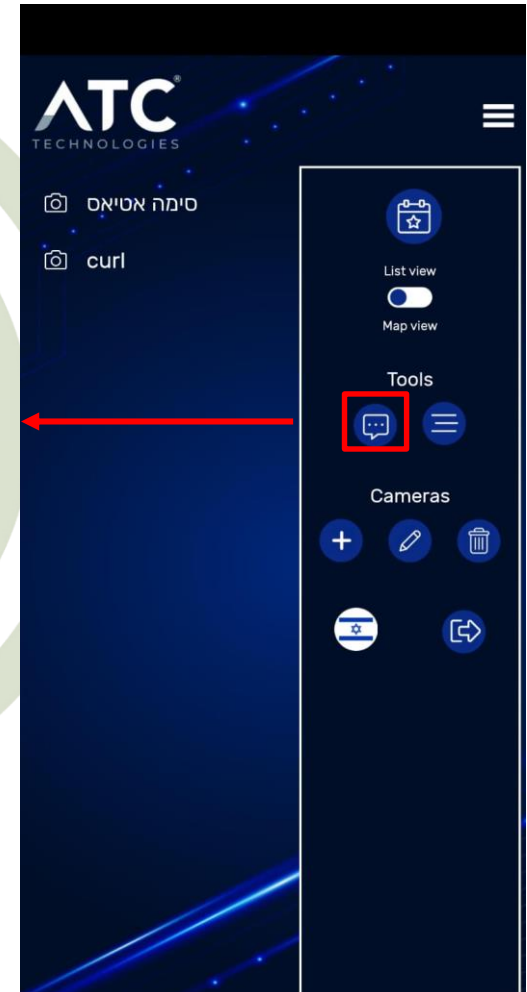
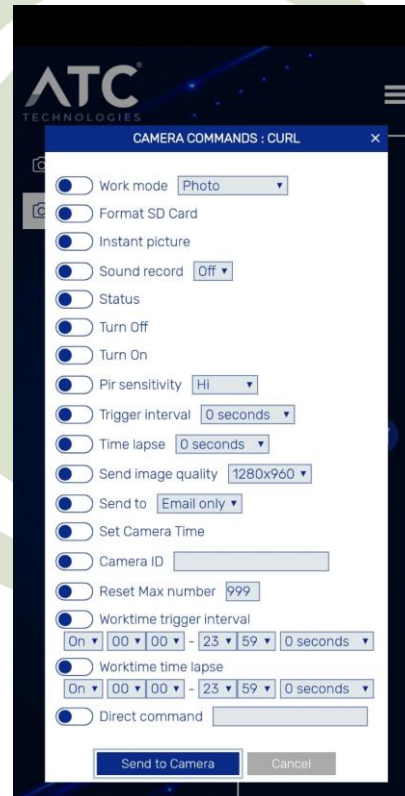


”תמונה אחת שווה אלף שומרים”

## Welcome to the ATC system

This screen is a camera management

Camera Calibration -  
The user can send to the camera commands for editing.

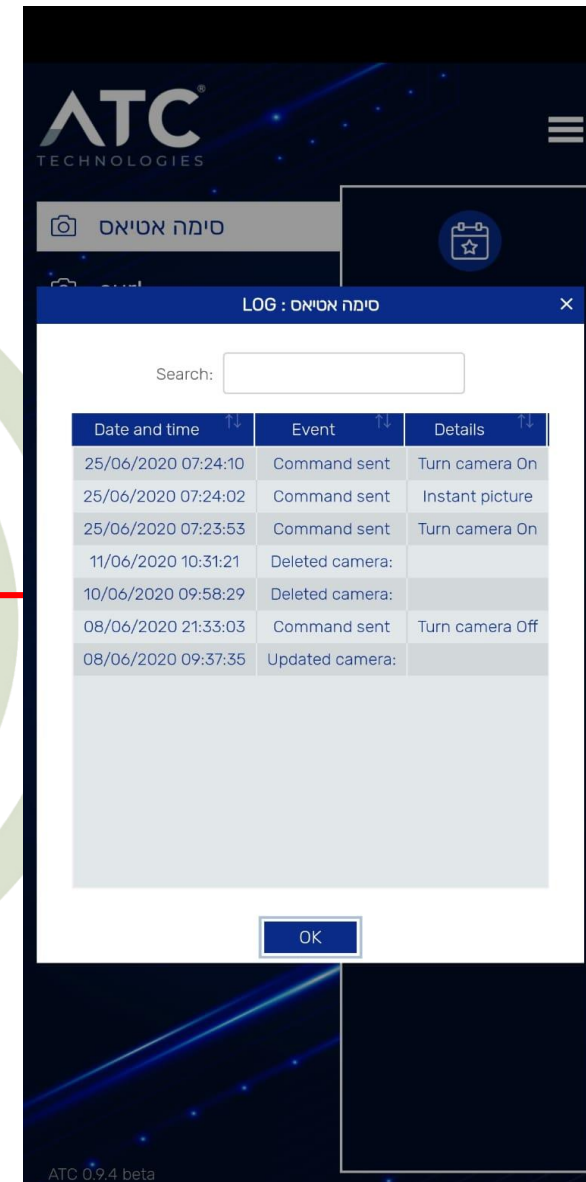
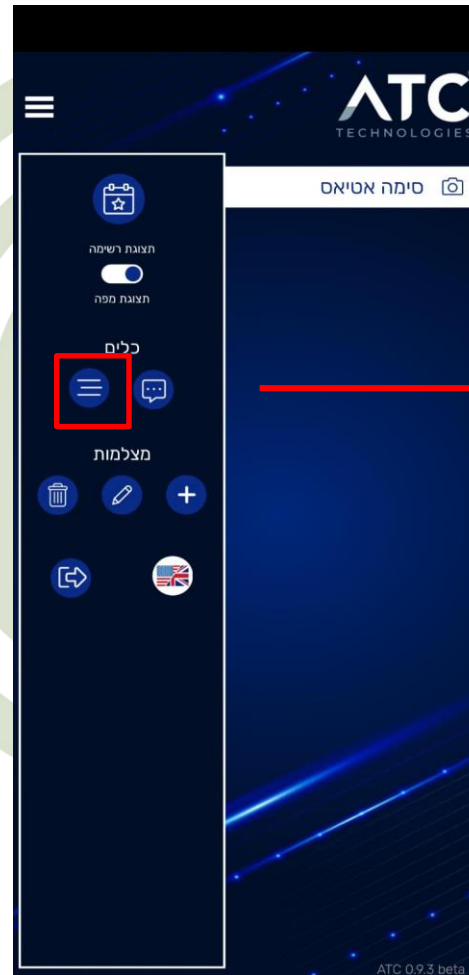


## Welcome to ATC system

This screen is a camera management screen

### ➤ Log

View all of the history of the specific camera action we selected.





➤ הוספת מצלמה חדשה

יש למלא את פרטי המצלמה החדשה אותו  
אנו רוצים להוסיף.

## Welcome to ATC system

This screen is a camera management screen

➤ שם ייחודי - שם המצלמה

➤ קוד IMEI

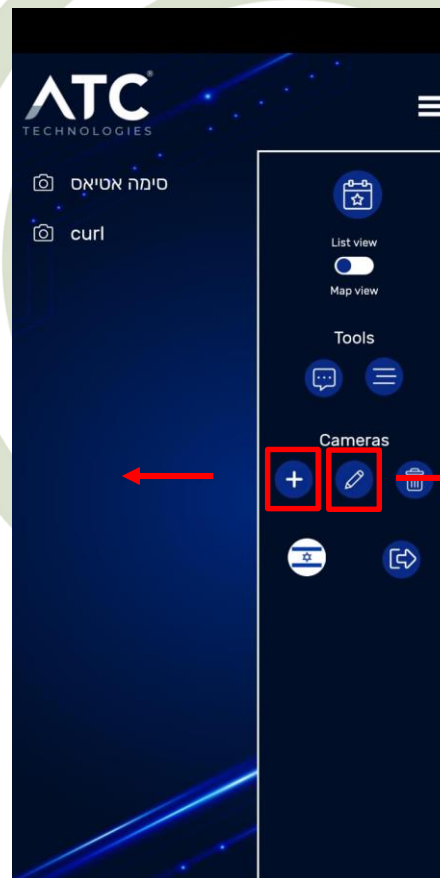
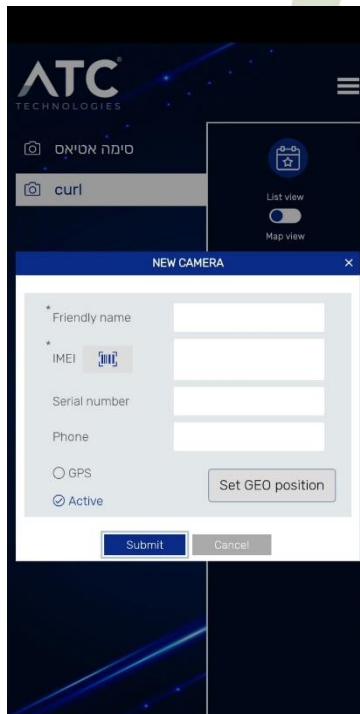
➤ מספר סידורי

➤ טלפון

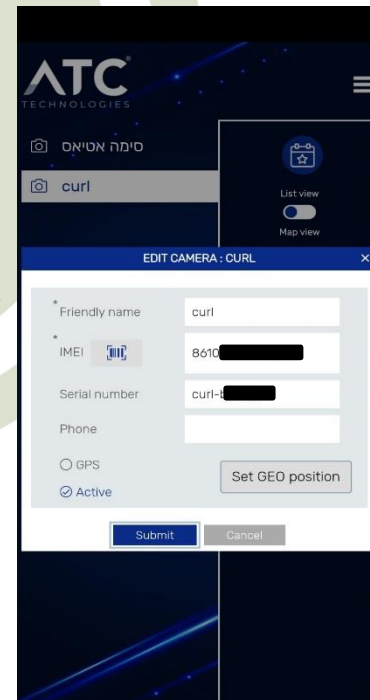
➤ מיקום

➤ User can add a new camera.

The user need to fill the camera details.



➤ User can edit the camera details.



”תמונה אחת שווה אלף שומרים”